

# MAPPING CONSERVATION LANDS IN ONTARIO



An Innovative Pilot Project for Conservation Authorities

[www.CAmaps.ca](http://www.CAmaps.ca)

Overview of CA Maps

May 7<sup>th</sup> 2009

Jeff Moxley,  
Ganaraska Conservation

Kim Blair,  
Trent Conservation Coalition



# TABLE OF CONTENTS



- Introduction / Background
- Meeting Legislative Requirements
- Source Protection Data
- Leading the Pack
- Questions

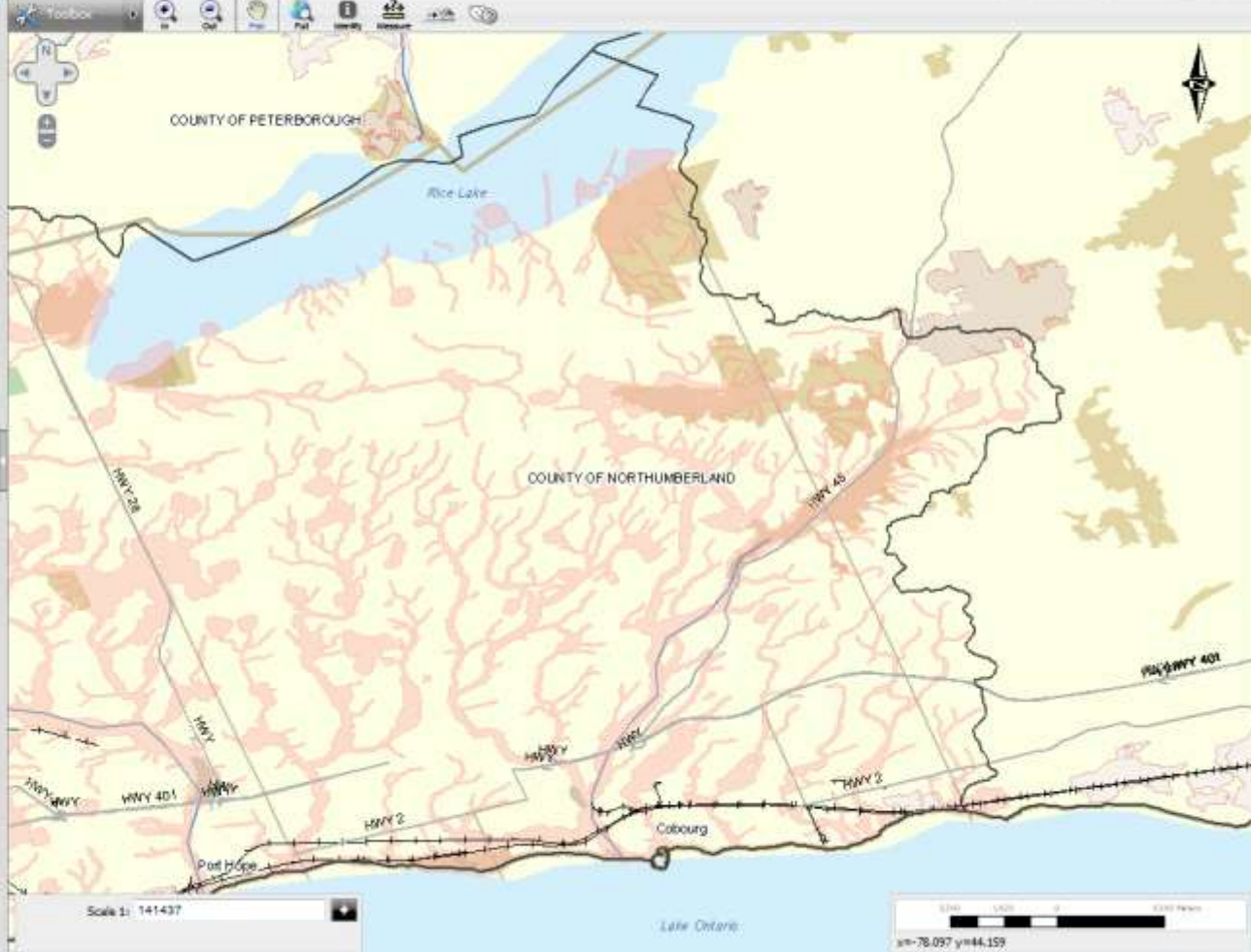


“CA Mapping, GIS and IT infrastructure are similar to other types of provincial infrastructure (such as highways and municipal roads) have similar issues.”



Ganaraska Region Conservation Authority - Public Mapping Site

- Overview Map
- Layer List
- Regulation Limit
  - Conservation Area
  - Cells
  - CAHRA's City
  - Conservation Authorities
  - Place Names
  - Regulated Wetland
  - Single Tier Municipality
  - Upper Tier Municipality
  - Lower Tier Municipality
  - Drainage Boundary
  - Roads (Provincial)
  - Roads (Regional)
  - Roads (Local)
  - Railway
  - Use and Classification
  - Rivers
  - Lake
  - Watercourse
  - Watershed
  - Area of Natural And Scientific Interest
- Show Legend





# Legislative Requirements

## Maintaining/Transferring Records

- CWA, S54 & General Regulation, S11 – must retain records (for 15 years)
- CWA, S54 – transfer to third party or public



# SPP Data Layers

- Highly Vulnerable Aquifers
- Significant Groundwater Recharge Areas
- Wellhead Protection Areas Type I systems
- Wellhead Protection Areas Type II and III systems
- WHPA-Q1
- WHPA-Q2
- Surface Water Intake Protection Zones (IPZ 1, IPZ 2, IPZ 3)
- Transport Pathways
- IPZ – Q
- SPA and SPR Boundaries
- Threats / Assessment Report Database Interface





# Leading the Pack



- First SPR to Join
- First to benefit
- All others are showing interest



URISA (Urban and Regional Information Systems Association)  
 Best Web GIS Award – Silver Medal

# Questions?

